

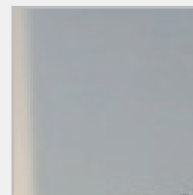
Timber Entrance Doors - Key Features

**GEORGE
BARNSDALE**
Est. 1884



1. Concealed Gasket *(Excellent Weather Performance)*

Concealed gaskets between the door and the frame provide excellent performance against the elements.



2. Security Laminated Glass *(For High Security)*

To meet the challenging standards of PAS 24 and the Building Regulations 2015: Security-Dwellings (Approved Document Q), all entrance doors can be specified with security laminated glass.



3. Multi-Point Locking *(For High Security)*

With a number of locking points distributed around the edge of the door, the multi-point locking system engages all bolts when either the handle is operated or when the door is closed (this will depend upon the choice of locking system).



4. Advanced Cylinder Locks *(For High Security)*

We only fit cylinder locks that meet the TS007 3 Star British Kitemark and the SS312 Sold Secure diamond standards (the highest rating in both schemes). We also offer a number of key options including 'keying alike' and 'master keying'.



5. Adjustable Hinges *(For ease of operation)*

To ensure that the door is perfectly positioned for easy operation, our timber entrance door designs incorporate adjustable hinges that allow the door to be set after installation. In addition, an adjustable lock keep helps to maintain the perfect balance between ease of closing and tight weathersealing.

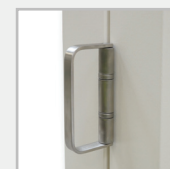
Timber Bifold Doors - Key Features

**GEORGE
BARNSDALE**
Est. 1884



1. Magnetic Catches *(For Ease of Operation)*

Discrete magnetic door catches and holders allow the swing door to hold to the adjacent panel with minimal effort.



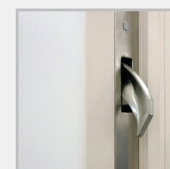
2. Intermediate Door Handles *(For Ease of Operation)*

To avoid reaching and bending to open the doorset fully, our bifold designs incorporate intermediate door handles rather than shoot bolts.



3. Low Resistance Sliding *(For Ease of Operation)*

Once the bifold door is installed, the low resistance sliding mechanism can be adjusted to ensure that it opens and closes with ease.



4. Multi-Point Locking *(For High Security)*

A multi-point locking system provides locking points around the entire door which are engaged through simple operation of the handle.



5. Advanced Cylinder Locks *(For High Security)*

We only fit cylinder locks that meet the TS007 3 Star British Kitemark and the SS312 Sold Secure diamond standards (the highest rating in both schemes). We also offer a number of key options including 'keying alike' and 'master keying'.



6. Weather Seals *(For Excellent Weather Performance)*

Weather seals fixed on the door leaves and within the track ensure that all parts of the door are well sealed.

Timber Casement Windows - Key Features

**GEORGE
BARNSDALE**
Est. 1884



1. Dual Weather Seals (For Excellent Weather Performance)

For excellent weather performance dual weather seals are discreetly positioned within the sash of the casement window. They create a low pressure cavity which helps to retain warmth and exclude noise and moisture.



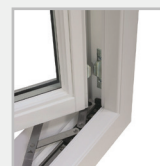
2. Multi-Point Locking (For High Security)

Using multiple locking points and bi-directional cams, our casement window offers excellent security as standard.



3. Concealed Hinges (Ease of Opening)

As standard all casement window designs are supplied with a concealed hinge located within the frame. The concealed hinge retains the opened window position firmly in place without the need for additional stays and is invisible from the inside when the window is closed. As standard, the hinge allows the window to open up to 90 degrees in order to maximise the opening for escape purposes.



4. Hinge Protectors (For High Security)

All of our casement windows are fitted with hinge protectors as standard, providing additional strength to prevent forced access.



5. Easy Clean Position (Ease of Cleaning)

Our concealed hinges (including the restricted option), allow the sash, when opened, to slide towards the centre of the frame to enable the outside to be accessed for easy cleaning. We also offer a reversible hinge which allows the casement window to be completely rotated so that the outside of the glass is on the inside.

6. Restrictor Hinge

With a built-in safety restrictor, this hinge prevents the casement window from initially opening from more than 15 degrees. Like our standard hinge, the restrictor hinge is concealed.

Timber Contemporary Doors - Key Features

**GEORGE
BARNSDALE**
Est. 1884



1. Concealed Gasket

(Excellent Weather Performance)

Concealed gaskets between the door and the frame provide excellent performance against the elements.

2. Steel Reinforced Core

(For Strength and Durability)

The flat steel stabilizer enclosed in the door panel is thermally isolated to prevent thermal bridges. It guarantees optimum stability and has achieved best values in all performance classes defined in EN 14351-1.

3. Multi-Point Locking

(For High Security)



With a number of locking points distributed around the edge of the door, the multi-point locking system engages all bolts when either the handle is operated or when the door is closed (this will depend upon the choice of locking system).

4. Advanced Cylinder Locks

(For High Security)



We only fit cylinder locks that meet the TS007 3 Star British Kitemark and the SS312 Sold Secure diamond standards (the highest rating in both schemes). We also offer a number of key options including 'keying alike' and 'master keying'.

5. Concealed Adjustable Hinges

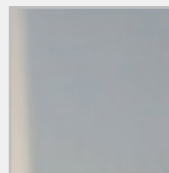
(For ease of operation)



For optimum aesthetics, for our contemporary timber doors we only use concealed hinges. These hinges are easy to adjust, helping to maintain the perfect balance between ease of closing and tight weathersealing.

6. Security Laminated Glass

(For High Security)



To meet the challenging standards of PAS 24 and the Building Regulations 2015: Security-Dwellings (Approved Document Q), all entrance doors can be specified with security laminated glass.

Timber French Doors - Key Features

**GEORGE
BARNSDALE**
Est. 1884



1. Concealed Gasket

(Excellent Weather Performance)

When the doors are closed, the concealed gaskets between the door and frame ensure that the entirety of the frame is completely sealed. This provides excellent performance against the elements.



2. Concealed Restrictor

(For ease of operation)

All outward opening French doorsets are fitted with a restrictor to limit opening to 90 degrees to prevent damage from being blown in the wind.



3. Adjustable Hinges & Keeps

(For ease of operation)

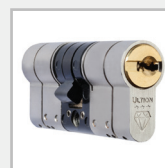
Our designs incorporate both adjustable hinges and keeps which allow the doorset to be set after installation and help to maintain the perfect balance between ease of closing and tight weathersealing.



4. Multi-Point Locking

(For High Security)

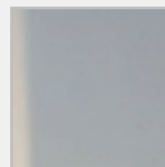
Concealed multi-point locks with integrated shoot bolts in the secondary door provide security as well as support along the length of the door to help prevent movement.



5. Advanced Cylinder Locks

(For High Security)

We only fit cylinder locks that meet the TS007 3 Star British Kitemark and the SS312 Sold Secure diamond standards (the highest rating in both schemes). We also offer a number of key options including 'keying alike' and 'master keying'.



6. Security Laminated Glass

(For High Security)

To meet the challenging standards of PAS 24 and the Building Regulations 2015: Security-Dwellings (Approved Document Q), all entrance doors can be specified with security laminated glass.

Timber Sliding Doors - Key Features

**GEORGE
BARNSDALE**
Est. 1884



1. Secure Ventilation

(For High Security)

Through a specialist handle the multi-point locking system can be engaged with an allowance of a 10mm gap to provide secure ventilation.

2. Concealed Gaskets & Sealing Plugs

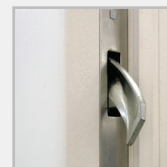
(For Excellent Weather Performance)

Concealed gaskets and sealing plugs between the doors and the frame ensure that the entirety of the frame is completely sealed when closed.

3. Multi-Point Locking

(For High Security)

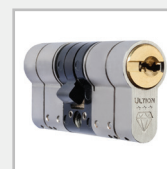
With a number of locking points distributed along the door frame, the multi-point locking system engages all bolts when the handle is operated.



4. Advanced Cylinder Locks

(For High Security)

We only fit cylinder locks that meet the TS007 3 Star British Kitemark and the SS312 Sold Secure diamond standards (the highest rating in both schemes). We also offer a number of key options including 'keying alike' and 'master keying'.



5. Low Resistance Rollers

(For ease of operation)

Low resistance rollers provide effortless opening and closing. For maximum efficiency after the doors have been installed, the rollers can be easily adjusted.



Timber Tilt & Sliding Doors - Key Features

**GEORGE
BARNSDALE**
Est. 1884



1. Concealed Gaskets & Sealing Plugs (For Excellent Weather Performance)

Concealed gaskets and sealing plugs between the doors and the frame ensure that the entirety of the frame is completely sealed when closed.



2. Multi-Point Locking (For High Security)

With a number of locking points distributed along the door frame, the multi-point locking system engages all bolts when the handle is operated. This includes the secure ventilation mode.



3. Specialist Handle (For High Security)

When the top of the door panel tilts inwards, the security handle can be locked in this position to provide secure ventilation.



4. Advanced Cylinder Locks (For High Security)

We only fit cylinder locks that meet the TS007 3 Star British Kitemark and the SS312 Sold Secure diamond standards (the highest rating in both schemes). We also offer a number of key options including 'keying alike' and 'master keying'.



5. Low Resistance Rollers (For ease of operation)

Allowing even large doors to be opened and closed with ease, low resistance rollers can easily be adjusted for continued perfect operation after the doors have been installed.

Timber Sliding Sash Windows - Key Features

**GEORGE
BARNSDALE**
Est. 1884



1. Astragal and Glazing Bars (Accurate Replication)

For period matching we can incorporate astragal and glazing bars to any sliding sash window design. As standard, we supply astragal bars for our Traditional Range designs, providing high performance at no detriment to the aesthetics. For listed properties the Historic sliding sash designs use a narrow solid bar to replicate original construction. Both astragal and glazing bars are available in a wide range of styles.



2. Concealed Weather Seals (For Excellent Weather Performance)

Our innovative, concealed weather seals achieve a much higher degree of weather performance than most of our competitors' products. Air-tight and discreet they do not detract from the authentic appearance of the window.



3. Sash Fasteners (For High Security)

Fitted with hook fasteners as standard, our sash windows offer excellent security and weather performance with an authentic appearance. For maximum security, locking sash fasteners can be fitted to the meeting rail, to meet Part Q requirements of the Building Regulations.



4. Sash Stops (For High Security)

The windows are fitted with sash stops on either side of the frame so that whilst they can be opened for ventilation, the opening is restricted for security and safety.



5. Accoya® Linings (Enhanced Durability)

Frame linings have always been a vulnerable point within timber sliding sash window designs. To overcome this design issue, and at no detriment to the window's traditional appearance, we only use Accoya® timber linings which provide greater durability.



6. Sash Horns (Accurate Replication)

For an accurate match to the original, top and/or bottom sashes can be specified with sash horns. We offer several different horn types and, if required, we can match to existing designs.

Timber Pivot Windows - Key Features

**GEORGE
BARNSDALE**
Est. 1884



1. Dual Weather Seals *(For Excellent Weather Performance)*

Discreetly located in the frame to avoid detracting from the authentic appearance, the dual weather seals help to retain warmth and exclude noise and moisture.



2. Suitable for Asymmetrical Shapes *(For Design Versatility)*

The pivot system will accommodate opening windows of irregular shapes.



3. Flush Hinges *(For Versatility)*

Flush fitted hinges allow large, heavy sashes up to 250kg in weight to pivot around the horizontal axis with 180 degrees of rotation. For smaller pivot windows, where flush hinges cannot be incorporated, surface mounted hinges are featured to ensure that the window's exceptional performance is maintained.



4. Multi-point Locking *(For High Security)*

Our multi-point locking system distributes the lock mechanism around the entirety of the frame.

5. Secure Ventilation *(For High Security)*

The timber pivot window design is offered with an optional handle that provides ventilation securely at night.

Timber Tilt & Turn Windows - Key Features

**GEORGE
BARNSDALE**
Est. 1884



1. Multi-position opening

(For Versatility)

Tilt – Rotating the handle by 90 degrees allows the window to tilt open for ventilation purposes. For security, the handle can be locked in this position.

Turn – Rotating the handle by 180 degrees allows the window to turn inwards. This enables the cleaning of the outside glass and frame.



2. Support of Larger Sizes

(Versatility of Design)

Incorporating high performance hinge mechanisms, our tilt & turn windows can support a large number of sizes, including triple-glazed units.



3. Dual Weather Seals

(For Excellent Weather Performance)

Discreetly located in the sash the dual weather seals help to retain warmth and exclude noise and moisture.



4. Multi-point Locking

(For High Security)

The multi-point locking system provides locking points around all four sides of the sash. In addition to providing excellent security performance, these fixing points prevent the timber from moving, contributing to the long-life of the windows.



5. Concealed Hinges

(Ease of Use)

As standard all timber tilt & turn window designs are supplied with a concealed hinge located within the frame. The concealed hinge retains the opened window position firmly in place without the need for additional stays and is invisible from the inside when the window is closed.

Timber Yorkshire Sash Windows - Key Features

**GEORGE
BARNSDALE**
Est. 1884



1. Dual Weather Seals

(For Excellent Weather Performance)

Traditionally Yorkshire sash windows had very poor weather performance. Through extensive product testing, our Historic Range design incorporates dual weather seals which help to retain warmth and exclude noise and moisture. The weather seals are discreetly positioned to not detract from the authenticity of the window.

2. Choice of Profiles

(For Accurate Replication)

For single glazing we offer 21mm glazing bars and 24mm for narrow cavity insulated glazing. Both sizes are available in a variety of profiles including square and ovolo.

3. Narrow Profiles

(For Accurate Replication)

On the meeting rail we are able to supply a 35mm width for single glazing or a 40mm width for narrow cavity insulated glazing.

4. Concealed Rollers

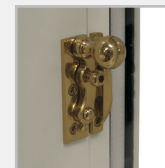
(For Smooth Operation)

Featuring an innovative track system with concealed rollers, the Yorkshire sash window opens and closes smoothly with minimal effort.

5. Sash Fasteners and Sash Stops

(For High Security)

All Yorkshire Sash windows are fitted with sash fasteners and sash stops so whilst they can be opened for ventilation, the opening is restricted for security and safety.



Timber Single Doors - Key Features

**GEORGE
BARNSDALE**
Est. 1884



1. Concealed Gasket

(For Excellent Weather Performance)

Concealed gasket between the door and the frame provide excellent performance against the elements.

2. Security Laminated Glass

(For High Security)

To meet the challenging standards of PAS 24 and the Building Regulations 2015: Security-Dwellings (Approved Document Q), all timber back doors can be specified with security laminated glass.



3. Adjustable Hinges

(For ease of operation)

To ensure that the door is perfectly positioned for easy operation, our timber back door designs incorporate adjustable hinges that allow the door to be set after installation. In addition, an adjustable lock keep helps to maintain the perfect balance between ease of closing and tight weathersealing.



4. Multi-Point Locking

(For High Security)

With a number of locking points distributed around the edge of the door, the multi-point locking system engages all bolts when either the handle is operated or when the door is closed (this will depend upon the choice of locking system).



5. Advanced Cylinder Locks

(For High Security)

We only fit cylinder locks that meet the TS007 3 Star British Kitemark and the SS312 Sold Secure diamond standards (the highest rating in both schemes). We also offer a number of key options including 'keying alike' and 'master keying'.

Timber Stable Doors - Key Features

**GEORGE
BARNSDALE**
Est. 1884



1. Concealed Gasket and Sealing Plugs

(Excellent Weather Performance)

Concealed and sealing plugs between the door and the frame provide excellent performance against the elements.

2. Security Laminated Glass

(For High Security)

To meet the challenging standards of PAS 24 and the Building Regulations 2015: Security-Dwellings (Approved Document Q), all stable doors can be specified with security laminated glass.



3. Adjustable Hinges

(For ease of operation)

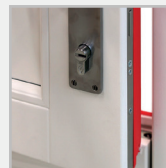
To ensure that the door is perfectly positioned for easy operation, our timber stable door designs incorporate adjustable hinges that allow the door to be set after installation. In addition, an adjustable lock keep helps to maintain the perfect balance between ease of closing and tight weathersealing.



4. Advanced Cylinder Locks

(For High Security)

We only fit cylinder locks that meet the TS007 3 Star British Kitemark and the SS312 Sold Secure diamond standards (the highest rating in both schemes). We also offer a number of key options including 'keying alike' and 'master keying'.



5. Multi-Point Locking

(For High Security)

With a number of locking points distributed around the edge of the door, the multi-point locking system engages all bolts when either the handle is operated.



6. Authentic Locking System

(For accurate matching)

The top door is operated in the same way as our standard locking system with a handle on each side. The lower door has a cylinder operated by a key externally and a thumb turn internally.