

GEORGE BARNSDALE

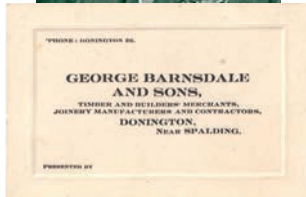
Est. 1884

Case Study Portfolio

TIMBER WINDOWS & DOORS



over
130
years
of premium timber
windows & doors



Committed to UK Manufacturing

For over 130 years and five generations we have been committed to the manufacture of premium timber windows and doors. We're proud to still remain a family business and to operate from the same site in Donington, Lincolnshire.

1884

George Barnsdale

The business was started in 1884 when George Barnsdale opened a small carpentry firm, which soon built a reputation for quality craftsmanship.

**1918 -
1939**

Walter & Frederick Barnsdale

Soon after the First World War, George's two sons Walter and Frederick joined the business. Between the wars Fred was involved with the development of BS644 (the British Standard for Timber Windows) and the brothers set up a modern joinery factory with the latest machines.

1945

John Barnsdale

The business did manage to keep trading during the turbulent times of the Second World War but was very much scaled down. After the war, Frederick's son John joined the business.

1984

Helen & Stephen Wright

When John was at retirement age in 1985, his daughter Helen and her husband Stephen joined the management team. It was Stephen that brought product performance to the forefront.

**1990 -
1998**

A Period of Significant Investment

During this period we were the first joinery company in the UK to introduce CAD into our design and production process. We were also the first company to invest in CNC technology.

2006

Tom Wright

Tom Wright became the 5th generation to join the business after training as a Design Engineer at Nissan. His remit was to improve product performance through the implementation of modern manufacturing processes. In this year Tom introduced a fully integrated Windowline, an automated window production line fully integrated to our office software.

**2014 -
2016**

SERVOWOOD

Stephen was one of two UK representatives on the EU funded SERVOWOOD project. SERVOWOOD was formed to work towards better prediction of the long term performance of coating on external joinery.

2017

Research & Development Test Centre

In August the Research & Development Test Centre was opened. This allows the company to test to the relevant standards for air permeability, water-tightness and resistance to wind, salt spray testing of ironmongery and measuring the long term performance of Insulated Glass Units and coated timber.

Welcome to the George Barnsdale portfolio.

Timber has always been the material of choice for attractive buildings, due to its warm, tactile appearance and the ability it provides to alter its profiles and dimensions to create the exact design that is required.

At George Barnsdale, we have been making premium quality timber windows and doors in our Lincolnshire based factory since 1884. We have built our reputation on providing beautiful products of the highest quality with an uncompromising attitude towards high performance and long life.

Through substantial investment in research, development and testing we have created a range of windows and doors that excel in all areas of performance and have extensive test data (all from third party, UKAS approved test houses) ensuring that you have the confidence that we can back up our claims. This, coupled with our accreditations for quality, performance and sustainability, provide all the credentials to give you the confidence that our products perform to the highest levels.

Artisan Development

📍 Fitzrovia, London

Designed by Architect Rolfe Judd, Artisan, Fitzrovia is a development of 13 luxury residential apartments and ground floor retail units by the property developer Dukelease.

We manufactured traditional timber sliding sash windows and French doors for the replica Georgian facades and the restoration element of the project.

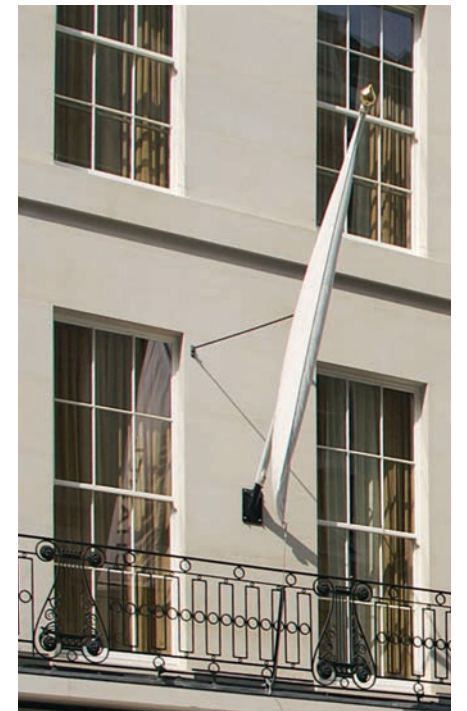


Chanel

📍 New Bond Street

The Chanel flagship store at 158-159 New Bond Street falls under the Mayfair Conservation Area.

As part of the remodel we supplied historic timber sliding sash windows, all of which incorporated narrow cavity insulated glazing units.





The Old Store

📍 Deal, Kent

We supplied contemporary timber casement windows, entrance doors and bifold doors, to a two-storey extension on an existing property in the heart of the Kentish coastal town of Deal.



Menders

📍 Abington Piggots

The menders is a new build property which replicates a traditional Tudor period farmhouse. We supplied traditional timber casement windows, an entrance door and french doorest, helping the property to fit seamlessly with its rural surroundings.



The Rex Building

📍 Queen Street, London

The Rex Building provides 74,980ft² of new build office accommodation behind a subtle array of contemporary and classic facades, creating a stylish, modern office building which is spread over 7 floors.

As part of the development, the original aesthetics of the exterior of the building had to be strictly adhered to whilst the inside was completely re-built with modern design and contemporary materials.

We manufactured very large sliding sash windows, many of which featured arched heads to match the original appearance of the building.

These aesthetics were combined with excellent modern performance techniques including the use of acoustic glass. As well as manufacturing the windows, we also produced some very large glazed screens with ornate corner details.



Amsterdam Hotel

📍 Trebovir Road, London

This project required the replacement of windows and doors to the front elevation of the Amsterdam Hotel that exactly matched the original design aesthetics.

The original windows and doors were replaced with high performance sliding sash windows, tilt and turn windows and French doors which were all manufactured from Redwood WoodHeart® and supplied fully finished in white, complete with plant-on bar glazing detail.



Stapleford Park

📍 Melton Mowbray, Leicestershire

The prestigious Stapleford Park Hotel required arched doorsets with a link screen for the newly constructed orangery which adjoins the grand hall.

As the orangery was to be used for celebrations, meetings and events, the doorsets had to comply with fire regulations and were designed to be used as fire escapes. It was also important that the orangery blended in with the rest of the grade I listed building, so the designs were modified to combine traditional aesthetics whilst maintaining modern performance.

Gloucester Quays

📍 St Ann Way, Gloucester

As part of this development, various listed buildings were renovated, requiring the design and manufacture of suitable windows and doors that would exactly match the period styling and look of the building.

This project required over 200 very large, high specification windows and doors measuring as much as 5m high. The windows and doors were designed with ornate timber frames and light panels that perfectly matched the original windows.





Holbeach St Johns

📍 Spalding, Lincolnshire

Our standard flush casement window was adapted and used to stunning effect within this picturesque barn conversion in Lincolnshire.

The flush casement windows and screens were all made to measure to suit both existing and

new openings within the property. Iroko was used to manufacture the windows and screens to create the very unique appearance that this project required.

St Paul's Church

📍 Chipperfield, Hertfordshire

St Paul's Church commissioned a new Parish Room extension to the 1830's flint and stone church which is set in a historically sensitive area.

The project involved the use of a traditional flint finish facing a cavity wall construction with lime renders and a slate roof.

We manufactured stormproof casement windows, arched screens and three doorsets for the church which were designed specifically to complement the existing traditional windows and doors that were already in existence.





Quadring

📍 Lincolnshire

We recently supplied a variety of windows and doors for a new build in the Lincolnshire village of Quadring. The brief for the build was for the design to be in keeping with the rural surroundings.

The new build is very traditional and maximises the daylight and the surrounding views by having tilt and sliding doors fitted to the first floor and a bifold door fitted to the ground floor, both with integral blinds fitted in the glazing.

In addition to the entrance and stable doors, George Barnsdale designed and manufactured a mix of casement windows, bifold & tilt & sliding doors.

Piccadilly

📍 Old Park Lane, London

The refurbishment of this existing character building involved the customisation and manufacture of 120 traditional box sliding sash windows to comply with the strict planning requirements of Westminster Council.

The weight and pulley windows were used in the Piccadilly and Old Park Lane elevations and were single glazed with 12.8mm sound reducing glass.

Double glazed and fully reversible casement windows and tilt and turn windows were fitted to the rear elevation and lightwell.

This project was registered on the Sikken's Sentinel Plus programme for planned maintenance of the paint finish.



The Bishops Avenue

📍 The Bishops Avenue, London

This prestigious residential property situated on The Bishops Avenue in London, required the manufacture of windows and doors to replicate the original designs including the astragal bar detailing.

We manufactured a combination of sliding sash, tilt and turn and stormproof casement windows and doorsets. The select location of the property demanded both careful aesthetic detailing and high performance specifications.

Chestnut Road

📍 Barnes, London

This £500,000 new build residential house is conceived as two separated blocks, each of two storeys, linked via a glazed stair core and arranged around two sides of a sunken garden.

Environmental credentials include high thermal insulation, rain water buffering and long service life, as well as providing a habitat for flora and fauna, earning the design a place in the finals of the Grand Designs Awards.

We manufactured a number of tilt and turn windows, flush casement windows, outward opening entrance doors and sliding patio doors for this project.

The large openings required high performance products that gave excellent thermal insulation and weather resistance, matching the low carbon credentials of the building. For the exceptionally large door openings, we manufactured three leaf sliding doors, each on their own tracks that could open to leave the spacious openings visually free.



Earls Court Station

📍 Earls Court, London

Extremely strict planning requirements from English Heritage had to be met to complete the major refurbishment of Earls Court Tube Station.

The main façade of this Victorian building had been destroyed by continuous change to the building. Using the one remaining shop front, we carried out a detailed survey to design

and reproduce the exact detailing. We then manufactured three new shop fronts and refurbished the existing shop front with new doors and sashes.

To the rear of the building we also manufactured special softwood casement windows that were all single glazed and matched the original mouldings.



Kings Cross

📍 Kings Cross, London

This project consisted of the reconstruction of six separate buildings in the Kings Cross area, each with their own planning restrictions and requirements that needed to be met.

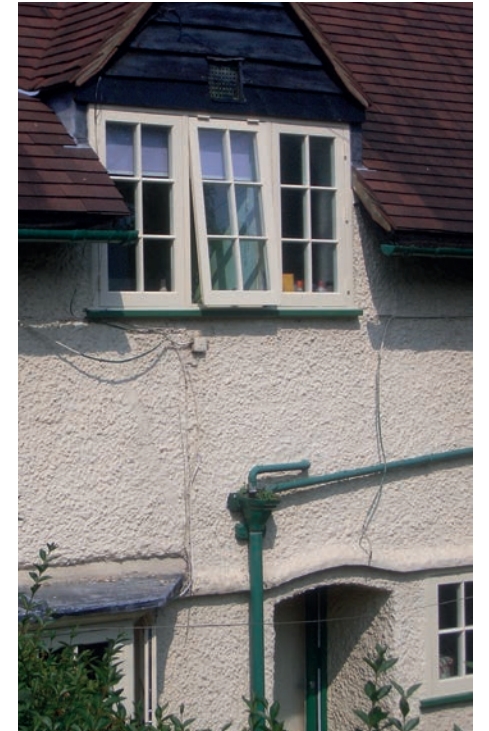
We designed, manufactured and installed over 350 sliding sash windows and 40 doorsets for this project. The windows were installed with a 30mm sealed unit comprising of 10.8mm acoustic laminated glass, 12mm cavity and an 8mm coated pane of glass.

Poundbury

📍 Poundbury, Dorset

This development is part of the Poundbury settlement, founded by HRH Prince of Wales, as an area of architectural importance. The planning of this area has been centred on high environmental quality with a focus on materials.

We manufactured a range of casement windows including some specialised designs, as well as a number of arched softwood screens and doorsets.

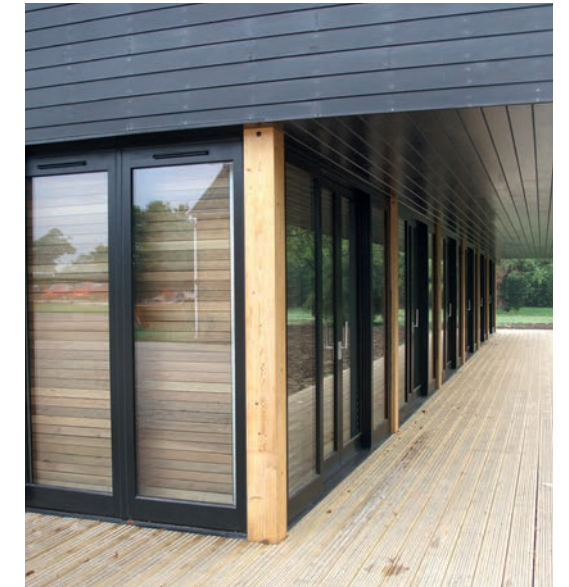
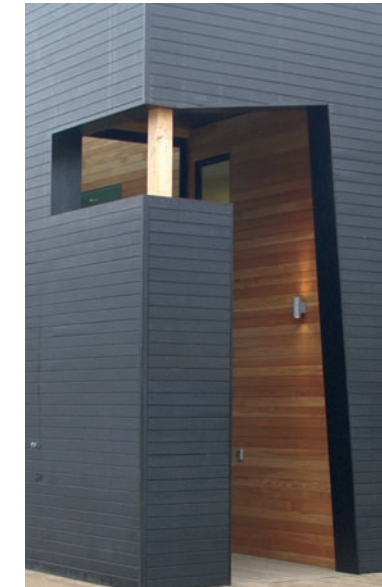


Letchworth

📍 Letchworth, Hertfordshire

This project is in Letchworth which was the first Garden City to be developed, this in turn initiated an international Garden Cities movement. Financed by The Howard Cottage Society, this area has undergone recent improvements to restore the idea of a peaceful and elegant environment.

Strict requirements were made on the design by the Conservation Officer and a variety of different flush casement windows have therefore been used in a very sensitive way to fit in with the Letchworth vernacular, including the use of plant on bars. These windows were all factory finished and glazed to provide the highest performance and security.



Myddelton House

📍 Enfield, Middlesex

This £1.2 million project involved the construction of a two storey eco-friendly timber office building that focused on the environmental principles of air flow, control of natural light and natural materials.

We manufactured 8 sets of lift and slide patio doors, flush casement and fully reversible casement windows, entrance doors, fixed light screens and large angular screens. The windows were pre-glazed with 2.4mm sealed units comprising of 4mm heat soaked toughened glass and 6.4mm softcoat laminated glass. This ensured that the windows absorbed heat and prevented heat loss.



Turley Corner

📍 Hailey, Whitney

Working alongside The Anderson Orr Partnership, we manufactured flush casement windows, inward opening doorsets and an outward opening doorset for this prestigious residential property in Oxfordshire.

The windows and doors were manufactured from Red Grandis which is a stable and durable hardwood and comes for FSC® Chain of Custody, ensuring that it has been sourced sustainably.

The windows and doors were supplied fully finished in Silk Grey (RAL 7044) in keeping with the design of the property.

The Warren

📍 Ashted, Surrey

The owners of this picturesque home in Surrey had very specific requirements for the refurbishment of this property including the need to replicate the astragal bar detail of the original windows.

We manufactured high performance flush casement windows, inward opening entrance

doors and outward opening French patio doors. The windows were manufactured from PEFC approved Redwood WoodHeart® and the doors were manufactured from FSC approved Red Grandis and all supplied fully finished in white.



Axis Development

📍 Parliament Street,
Nottingham

The major refurbishment of this old Co-operative building in the heart of Nottingham involved meeting the strict aesthetic requirements of English Heritage.

We manufactured and installed sliding sash windows, arched screens and large rectangular screens with sealed units measuring up to 6m². All of the windows and screens were manufactured from approved hardwood.



Winding House

📍 Coldred, Kent

Originally built in 1906 by a private mining company to extract coal, the Winding House was recently purchased and extensive renovations were carried out to convert the building into a residential home.

Whilst the external aesthetics of the building were maintained, the internal space has been completely renovated to achieve a very modern and contemporary design.

George Barnsdale manufactured 'A' rated flush casement timber windows, inward opening doorsets and outward opening doorsets.

The property now benefits from the greatly improved thermal and acoustic performance of the windows and doors, whilst maintaining both the historic external appearance of the building as well as matching the contemporary design internally.



Halam

📍 Halam, Newark

The main requirement for this project was to convert a fairly modern house with standard casement windows into an attractive property with period features.

We manufactured traditionally designed sliding sash windows, French doors and entrance

doors to achieve the desired aesthetics of the owners.

The project resulted in a modern building being aesthetically transformed into a period property whilst still maintaining the benefits of high performance windows and doors.



The Lancasters

📍 Hyde Park, London

The Lancasters, was originally an elegant parade of 15 magnificent stucco-fronted Grade II listed houses, required windows and doors that would complement the period and French Renaissance style of the building.

We manufactured and installed over 800 windows and doors including traditional box sash windows, tilt and slide sash windows, inward opening doors and sliding doors, over a 3 year period.

The architects specified FSC certified timber and as The Lancasters is a listed

development, we had to seriously consider the aesthetics of the wood as well as its performance, stability and durability.

The door frames and windows were manufactured from Redwood WoodHeart®, an x-ray selected engineered timber which is very similar to the original timber used by the Victorians.

We decided to use Red Grandis for the production of the doors as we needed something that would look sympathetic to The Lancasters heritage.

For more information please
call 01775 823000
email enquiries@georgebarnsdale.co.uk
or visit www.georgebarnsdale.co.uk
High Street, Donington, Spalding, Lincolnshire, PE11 4TA

